

Warranty

This product is warranted to be free of defects in materials and workmanship for one year for the original purchaser.

This device was built to exacting standards and carefully inspected prior to shipment.

This warranty does not cover device failure due to owner misuse or negligence, or normal wear and tear. The warranty does not extend to non-durable components, such as rubber accessories, casters, and grips, which are subject to normal wear and need periodic replacement.

WARNING: This product can expose you to chemicals, including Styrene, which is known to the State of California to cause cancer. For more information go to www.P65Warnings.ca.gov.

Emerald
SUPPLY

Manufactured for Emerald Supply.Brooklyn.NY

Emerald
SUPPLY

www.emeraldsupply.net

Overbed Table With Plastic Top



assembly instructions

1. Remove contents from carton and lay top board (1) upside down on flat surface. (Figure 1)

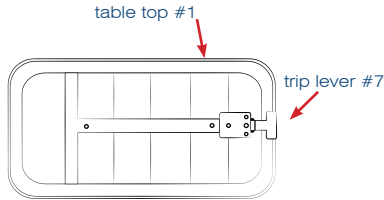
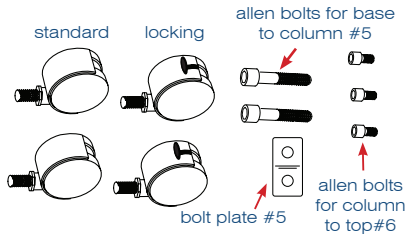


figure 1

castors #4



2. Take column assembly (2) and mount onto bottom of top board (1) and secure with three Allen bolts (6). (Figure 2)

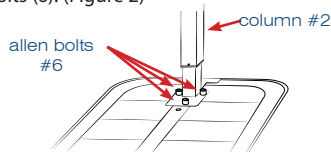


figure 2

3. Screw castors (4) into base (3) making sure the locking castors are opposite to the column. (Figure 3)

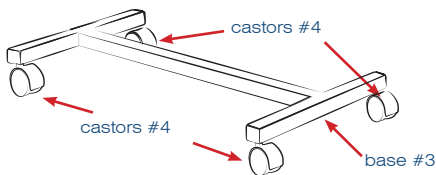


figure 3

4. Mount base (3) to column assembly (2) using bolt plate and Allen bolts (5). (Figure 4)

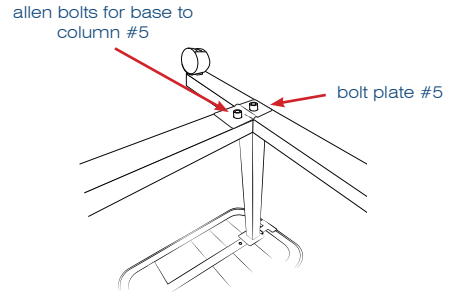
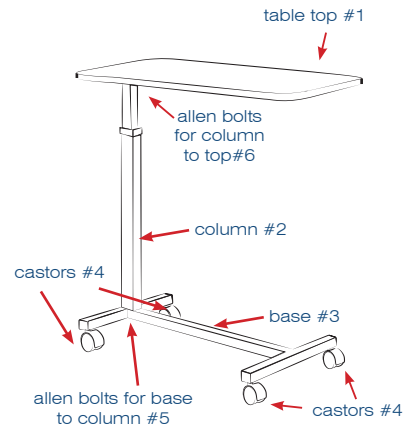


figure 4



operating instructions

1. To raise top to desired height, apply light pressure upward at any point under table top.
2. To lower, squeeze trip lever (7) up towards top and push down at column to desired height. Do not put pressure on tabletop end that is opposite the column, column assembly will lock upon release of trip lever (7).